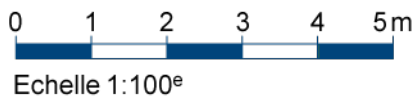
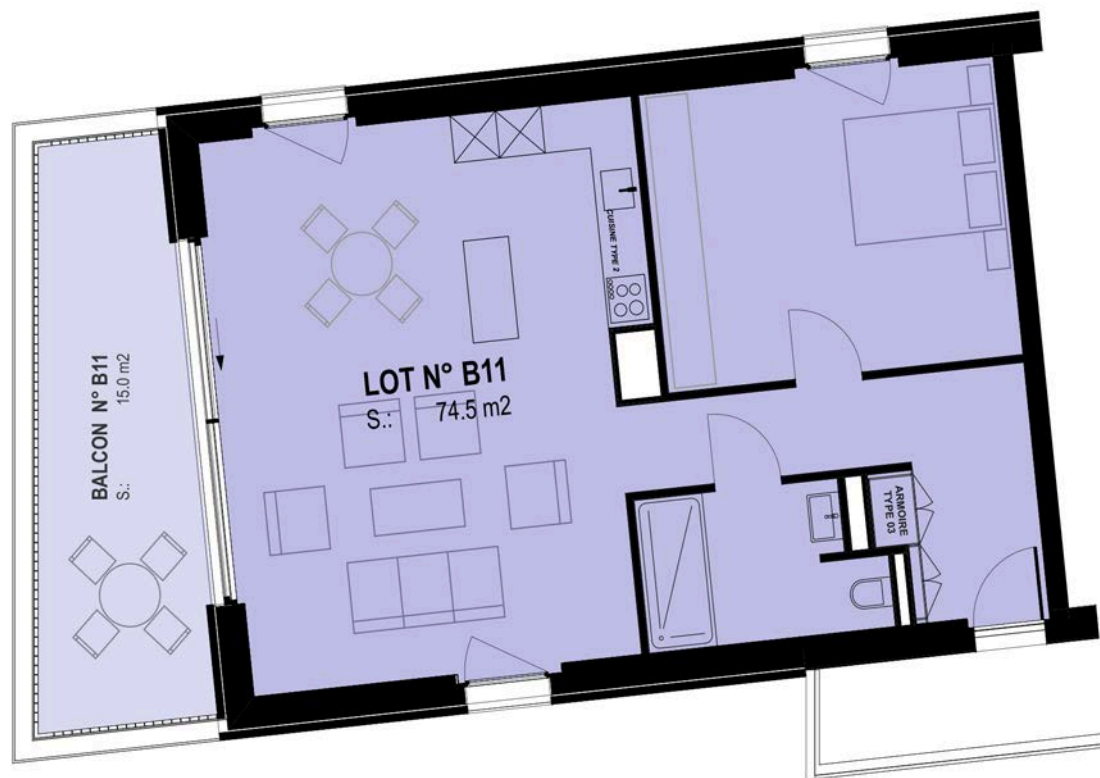




APPARTEMENT	B01
Etage	Rez
Pièces	2 ½
Surface	74 m <sup>2</sup>
Terrasse	15.5 m <sup>2</sup>
Loyer	2'327.-
Charges	129.-
<b>Total</b>	<b>2'456.-</b>





APPARTEMENT	B11
Etage	1 <sup>er</sup>
Pièces	2 ½
Surface	74.5 m <sup>2</sup>
Balcon	15 m <sup>2</sup>
Loyer	2'368.-
Charges	130.-
<b>Total</b>	<b>2'498.-</b>

0 1 2 3 4 5m  
Echelle 1:100<sup>e</sup>



APPARTEMENT	B21
Etage	2 <sup>ème</sup>
Pièces	2 ½
Surface	74.5 m <sup>2</sup>
Balcon	14.5 m <sup>2</sup>
Loyer	2'407.-
Charges	129.-
<b>Total</b>	<b>2'536.-</b>

